



trades ^{AI}

X

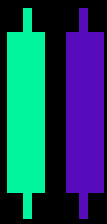
Owen.

TRADING MASTERS

▶ From Beginner to Advanced

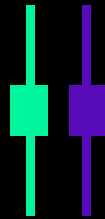
ELITE SIGNALS

STOCKS | FOREX | CRYPTO



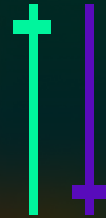
Momentum candle

This is your entry candle. The candle shows strong momentum in trade direction.



Indecision candle

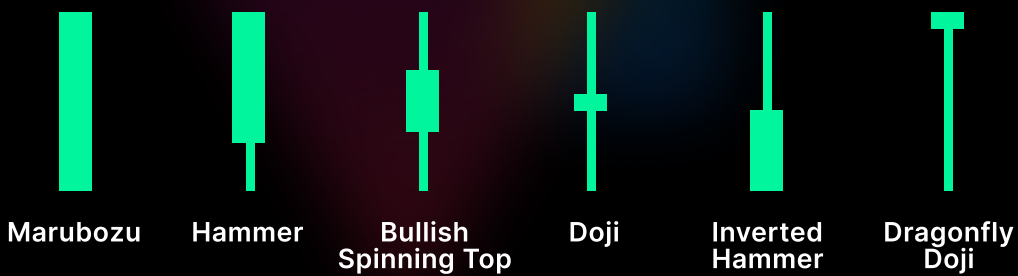
The candle shows weakness. Bulls and bear equal. We don't have any clear direction.



Wick rejection candle

Candle fails to break a certain level. Price is likely to reverse or continue.

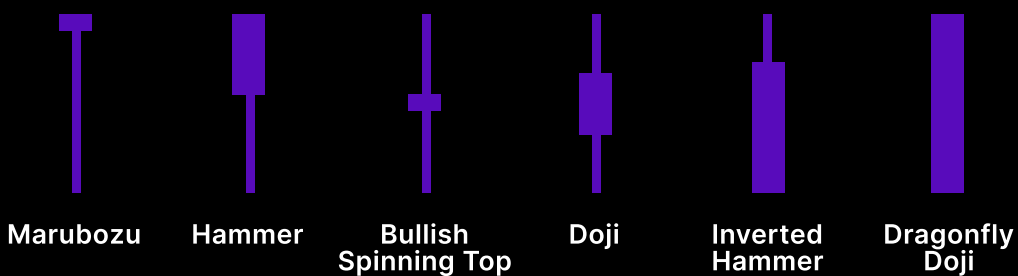
► Bullish Momentum



More Bullish

Less Bullish

► Bearish Momentum

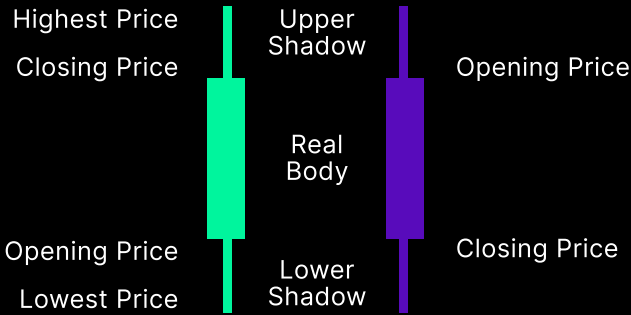


Less Bearish

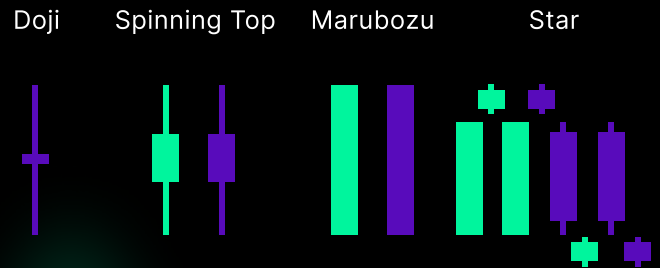
More Bearish

Candlestick Basics

BASICS



NEUTRAL



BULLISH

BEARISH

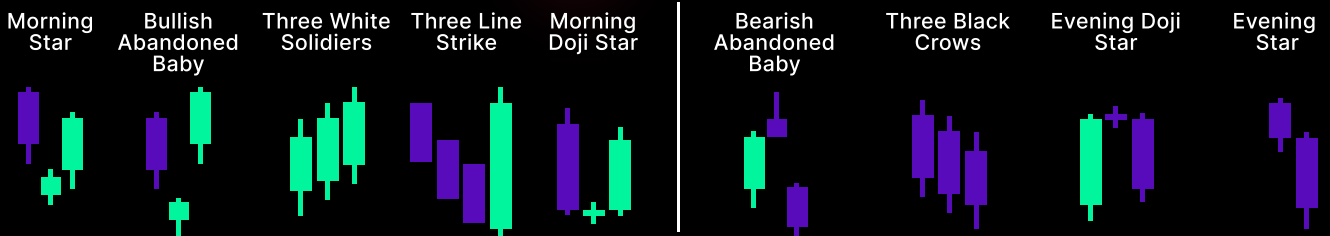
SINGLE CANDLE PATTERNS



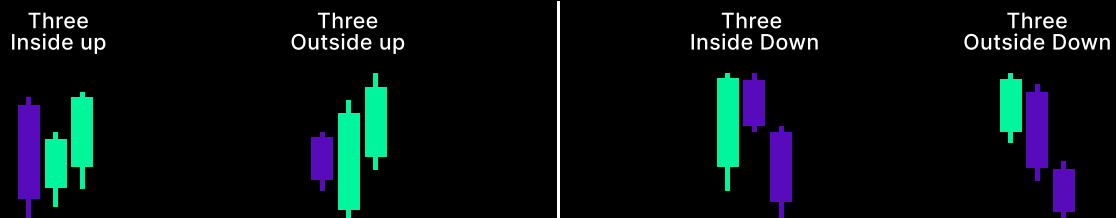
DOUBLE CANDLE PATTERNS



TRIPLE CANDLE PATTERNS

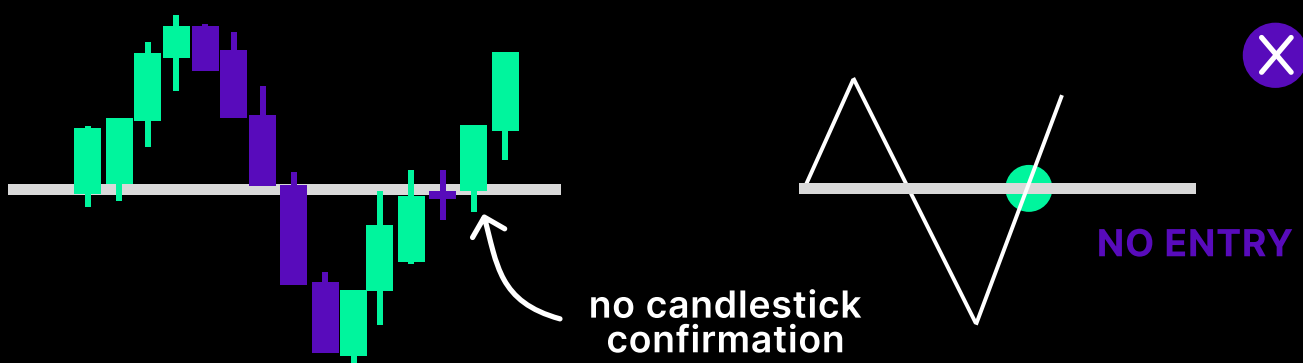
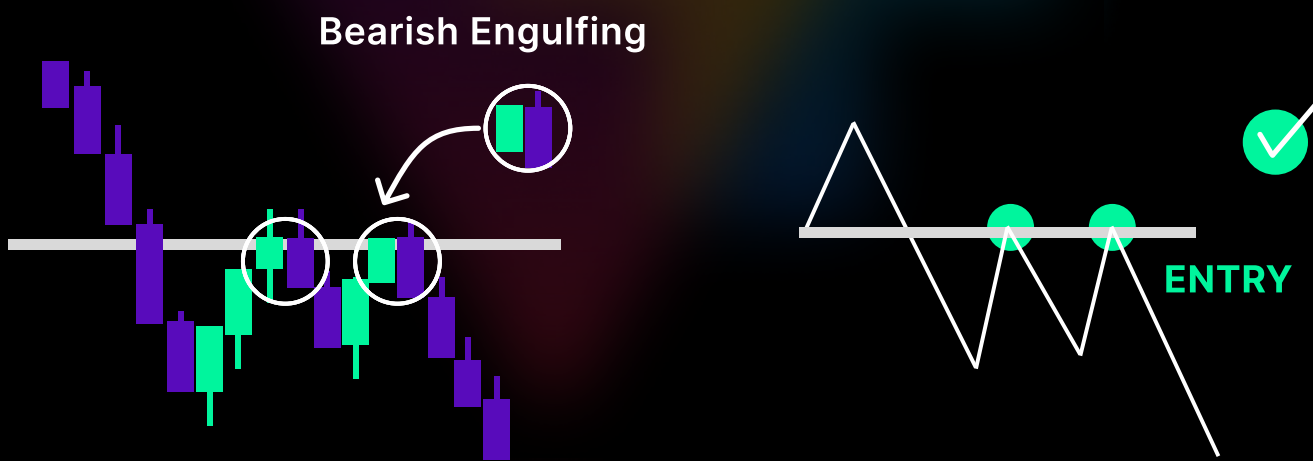
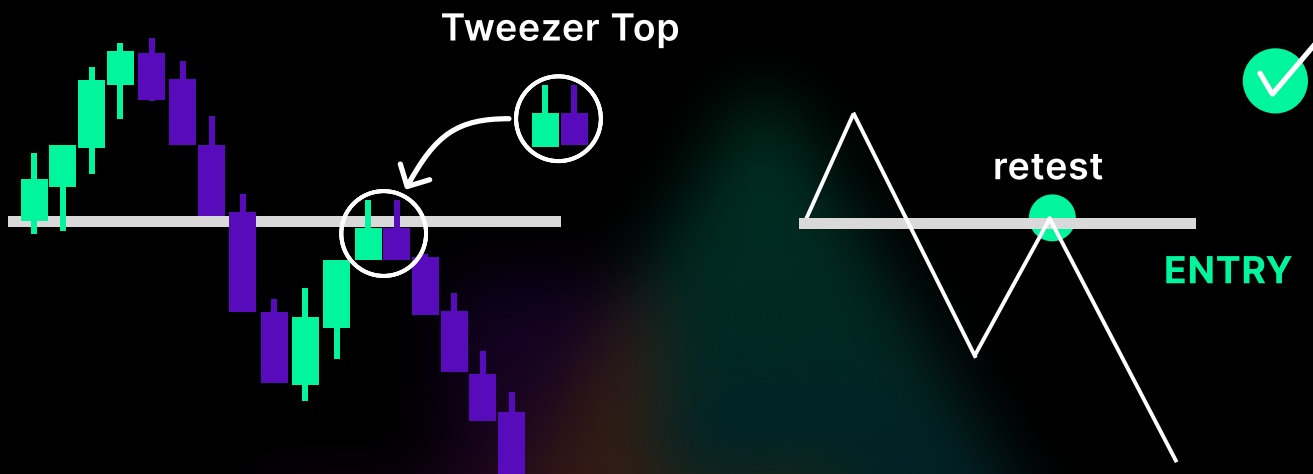


CONFIRMATIONS



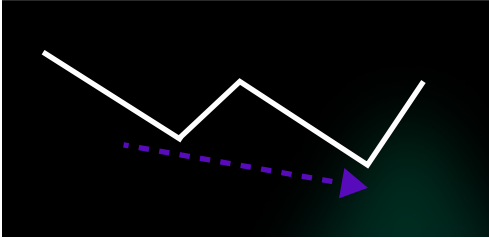
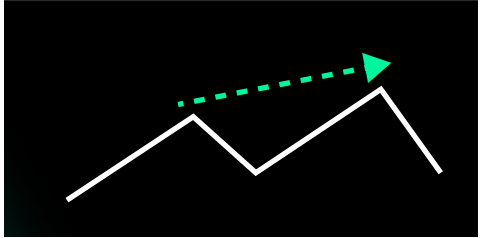
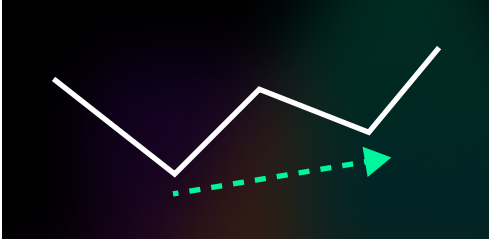
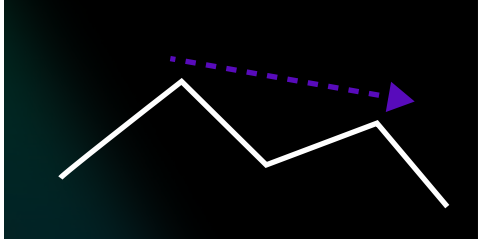
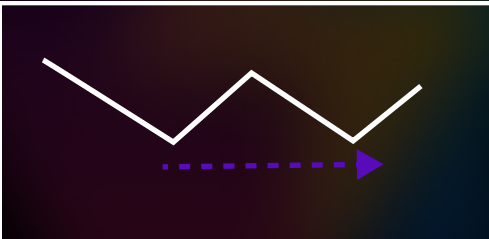
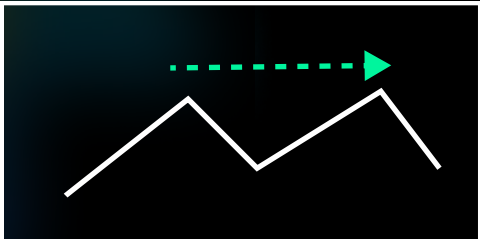
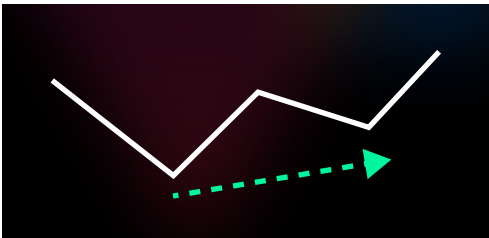
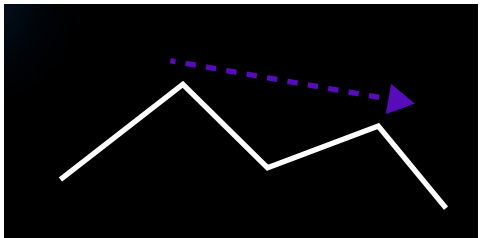
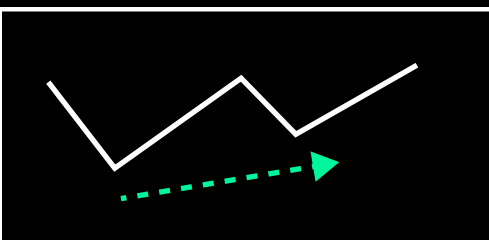
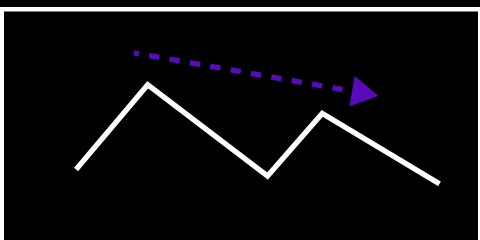
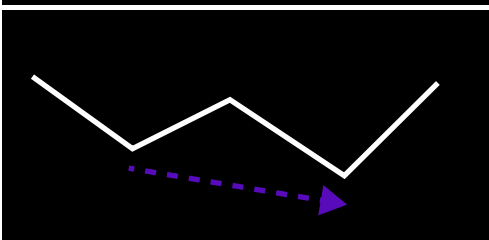
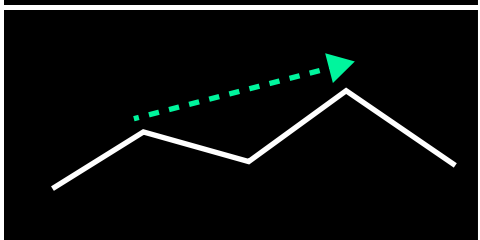
Candlestick Confirmation

Always wait for price action to confirm your trade idea. Multiple retests for a strong confirmation.

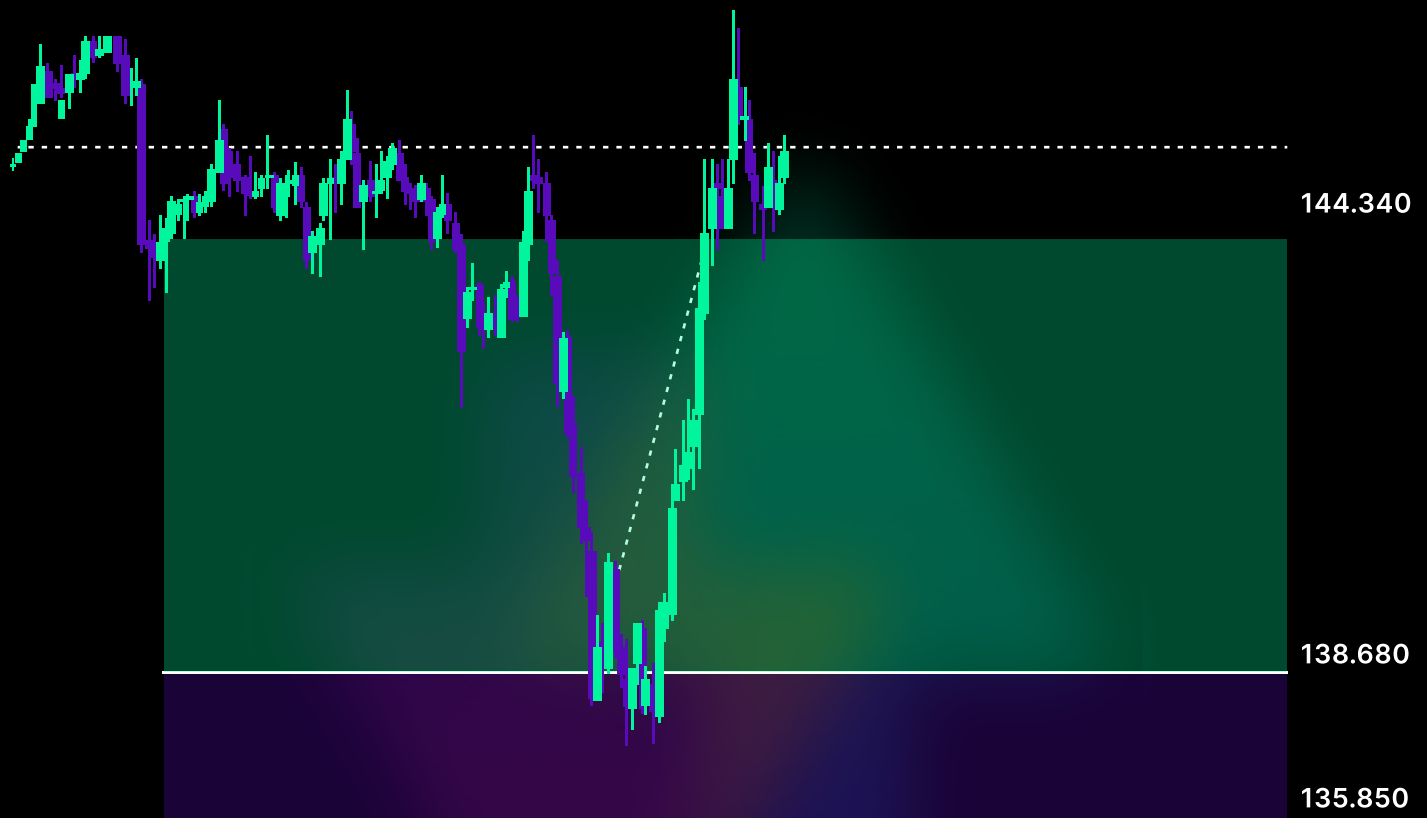


Divergences

TYPES OF DIVERGENCES

		Bullish Divergence	Bearish Divergence
Strong	Price		
	Oscillator		
Medium	Price		
	Oscillator		
Hidden	Price		
	Oscillator		

Skyrocket your trading. Become more profitable and consistent.



RR = 2

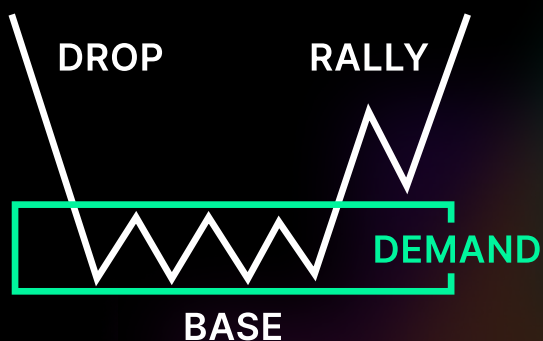
Example signal for Solana (SOL) from the algo

WHAT ARE THE ELITE SIGNALS INDICATORS?

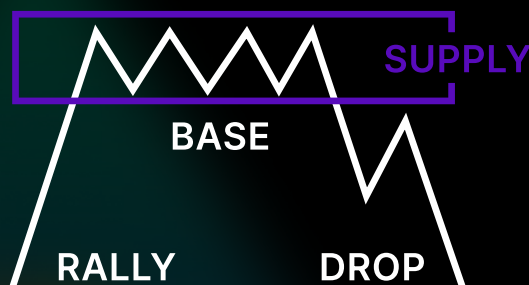
- ▶ AI driven for the highest accuracy Buy/Sell zones
- ▶ Makes trading easy on all devices
- ▶ Approved TradingView Premium Indicator
- ▶ Excellent for beginners and experienced traders
- ▶ In-chart signals with over 70% winrate
- ▶ Requires no more than 15-20 minutes a day
- ▶ Backed by 10 years of backtesting and live forwarding testing
- ▶ Accurate and convenient Low Timeframe and High Timeframe signals

REVERSAL PATTERNS

DROP-BASE-RALLY
BULLISH REVERSAL

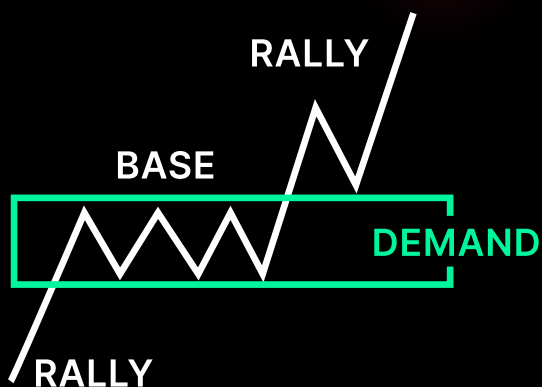


RALLY-BASE-DROP
BEARISH REVERSAL

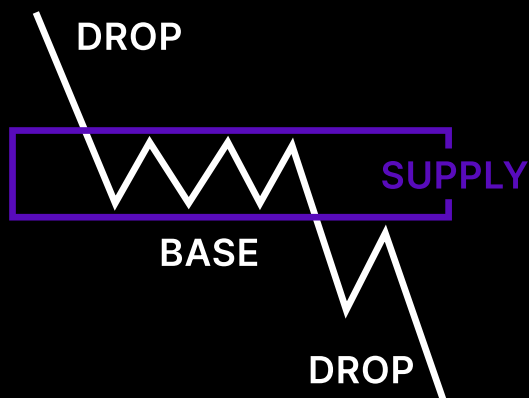


CONTINUATION PATTERNS

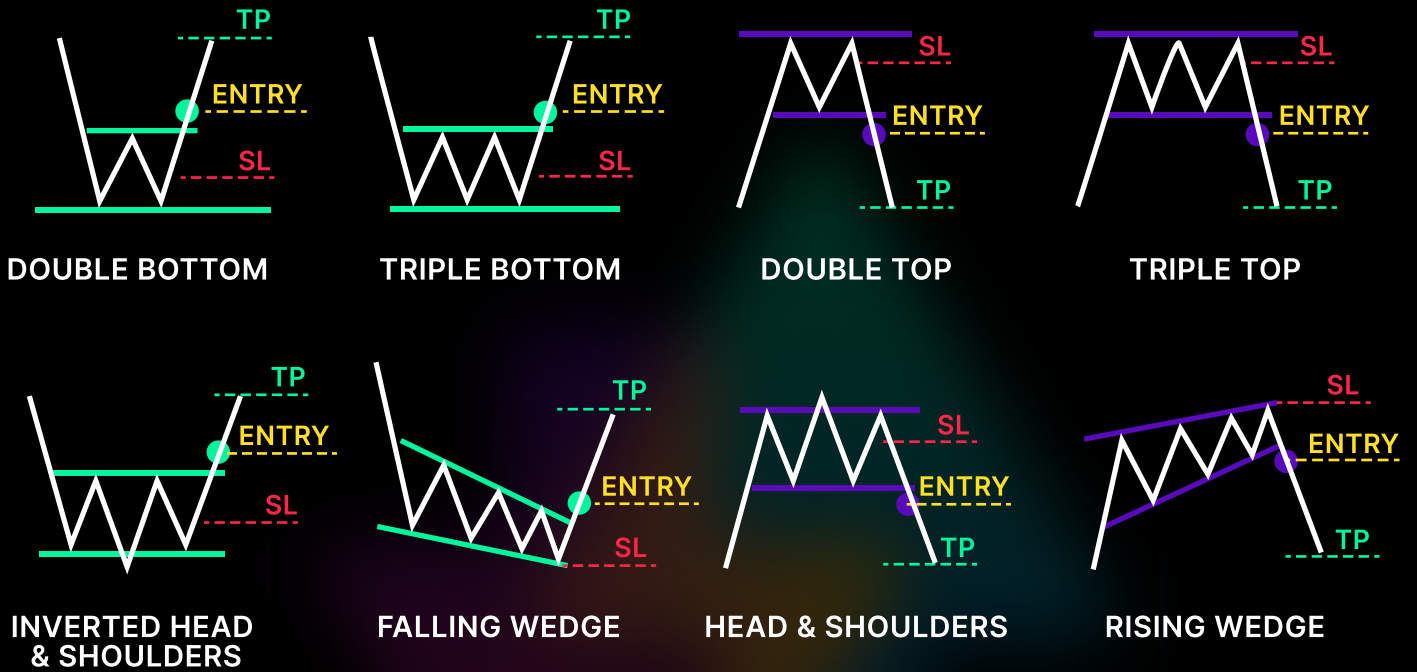
DROP-BASE-RALLY
BULLISH REVERSAL



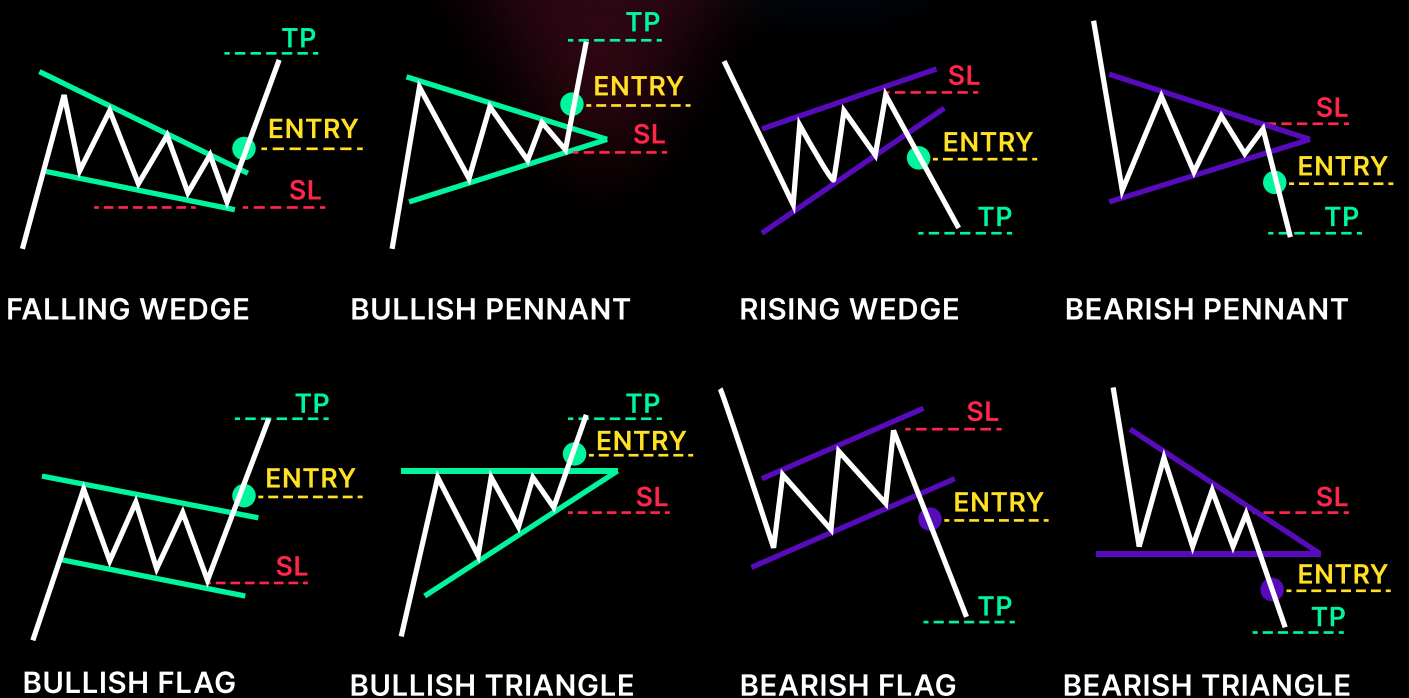
RALLY-BASE-DROP
BEARISH REVERSAL



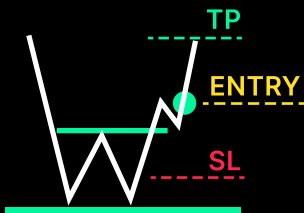
REVERSAL



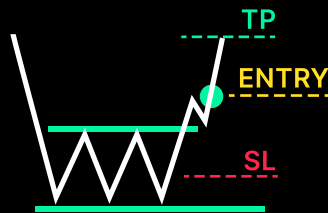
CONTINUATION



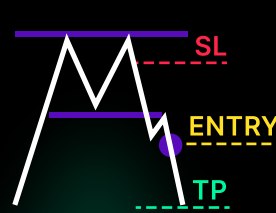
REVERSAL



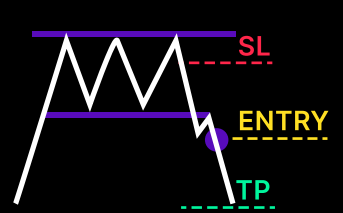
DOUBLE BOTTOM



TRIPLE BOTTOM



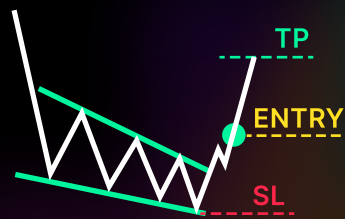
DOUBLE TOP



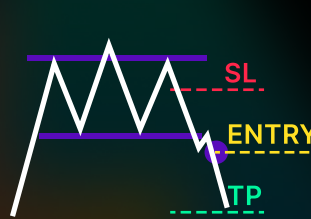
TRIPLE TOP



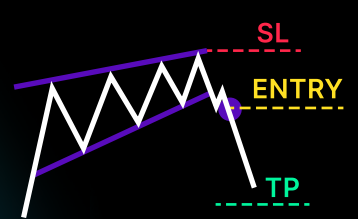
INVERTED HEAD & SHOULDERS



FALLING WEDGE

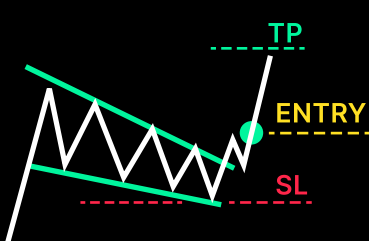


HEAD & SHOULDERS

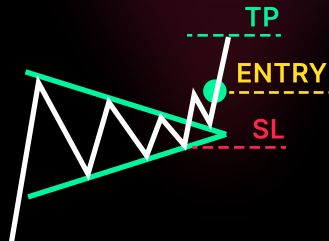


RISING WEDGE

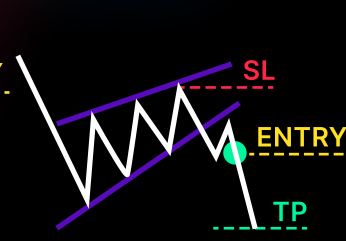
CONTINUATION



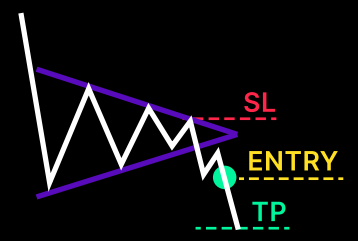
FALLING WEDGE



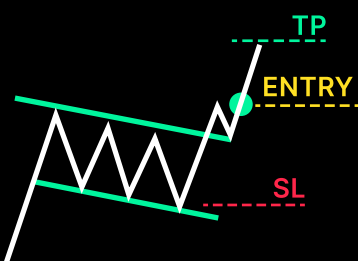
BULLISH PENNANT



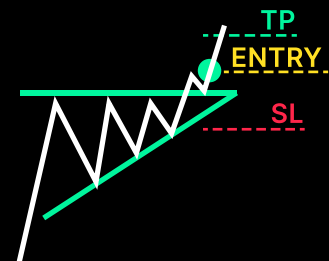
RISING WEDGE



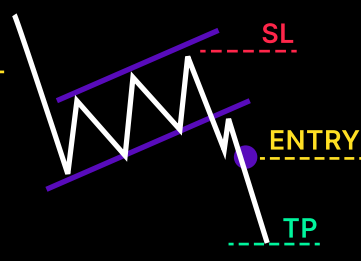
BEARISH PENNANT



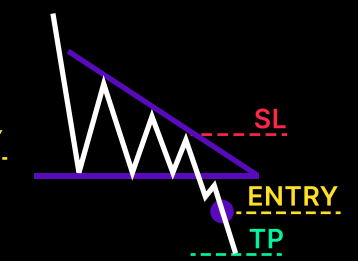
BULLISH FLAG



BULLISH TRIANGLE



BEARISH FLAG



BEARISH TRIANGLE

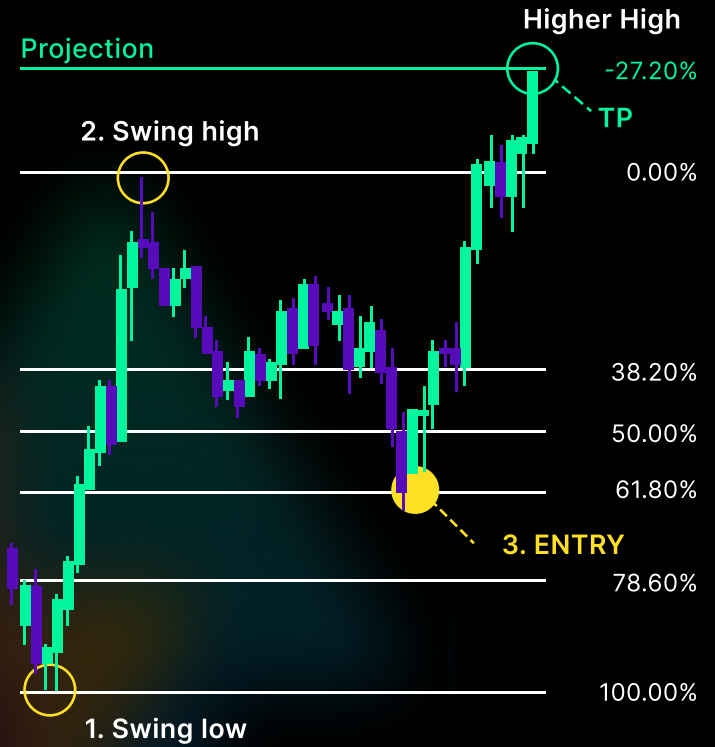
Fibonacci RETRACEMENTS AND PROJECTIONS

UPTREND FIBONACCI

In an uptrend start drawing from the **swing low** to the **swing high**.

Most popular entry levels are the **0.618** and **.50** retracement

Retracements for Entries.
Projections for Exits.



DOWNTREND FIBONACCI

In a downtrend start drawing from the **swing high** to the **swing low**.

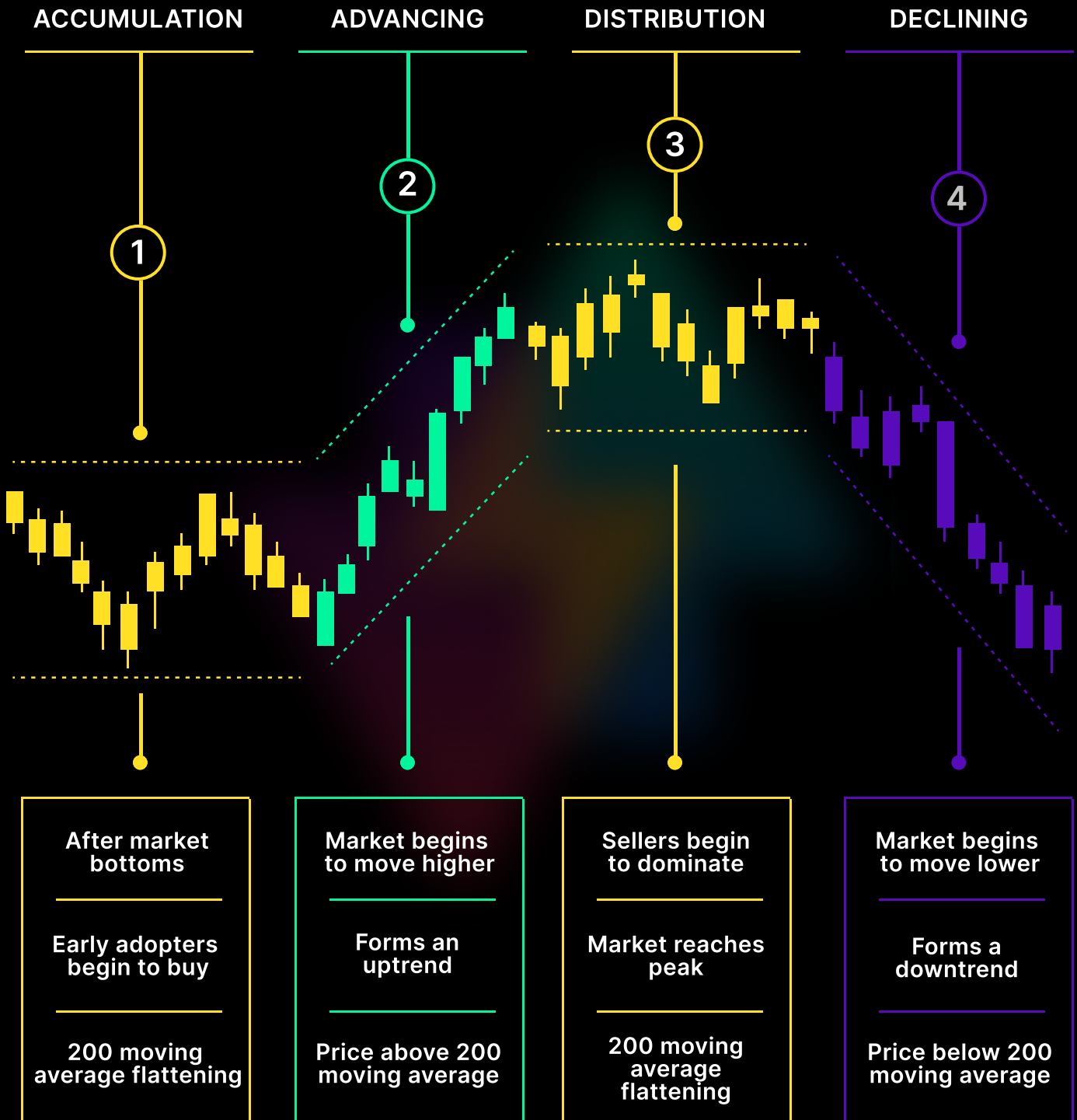
Most popular entry levels are the **0.618** and **.50** retracement

Retracements for Entries.
Projections for Exits.



4 Market Phases

RETRACEMENTS AND PROJECTIONS



Risk Reward Ratio

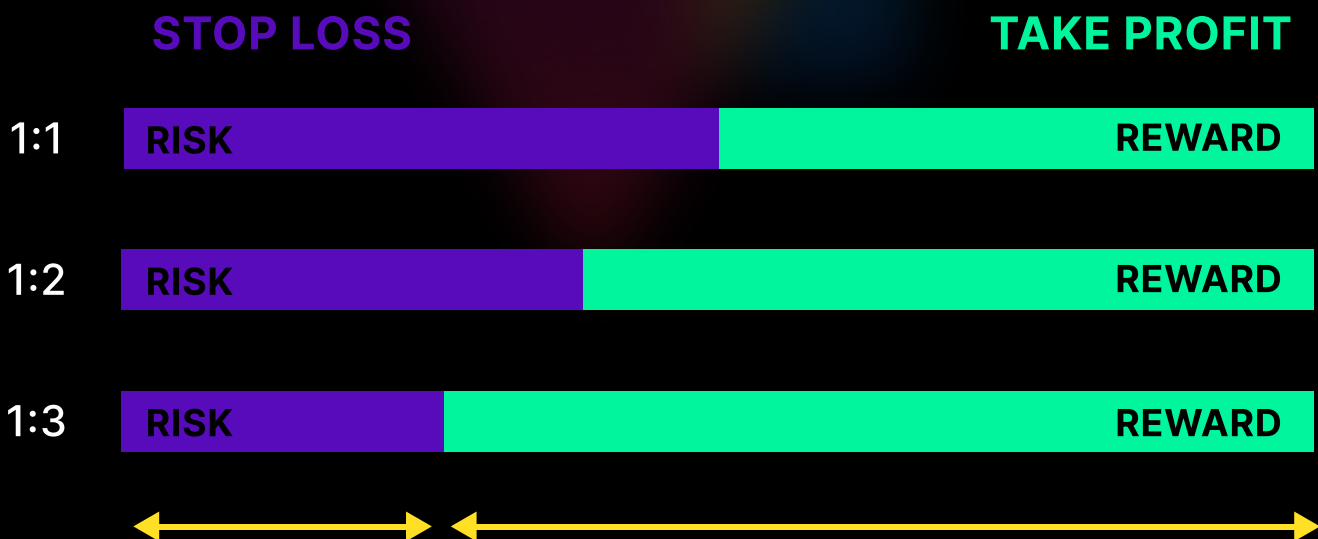
CALCULATE YOUR TRADE SIZE

Set a **fixed win ratio** for your trades and stick to it. You can be **profitable** even with a negative win rate.

Most traders use a risk reward ratio between **1:5** and **1:2**.

- ▶ Don't exit trades too early
- ▶ Always set your stoploss
- ▶ Trail stoploss when in profits

Risk Reward Ratio	Win Ratio Required For Break Even
1:1	50%
1:2	33%
1:3	25%



It's good to know which pairs are likely to move together. **Inversely pairs can be used for hedge positions**

SAME DIRECTION MOVING PAIRS

↑ EUR / USD
↑ EUR / USD
↑ EUR / USD
↑ USD / CHF
↑ AUD / USD

↑ GBP / USD
↑ AUD / USD
↑ NZD / USD
↑ USD / JPY
↑ NZD / USD

INVERSELY MOVING PAIRS

↑ EUR / USD
↑ GBP / USD
↑ USD / CAD
↑ USD / JPY
↑ GBP / USD

↓ USD / CHF
↓ USD / JPY
↓ AUD / USD
↓ AUD / USD
↓ USD / CHF



trades AI

Owen.